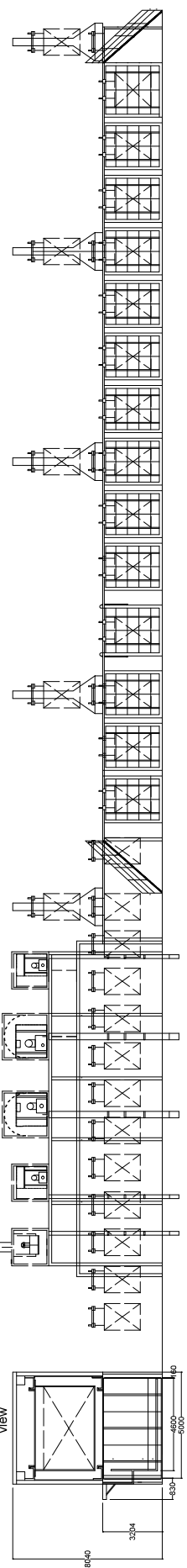
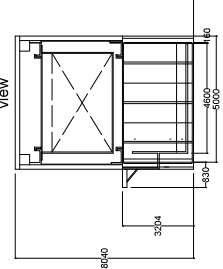


Athodic electrophoresis section view

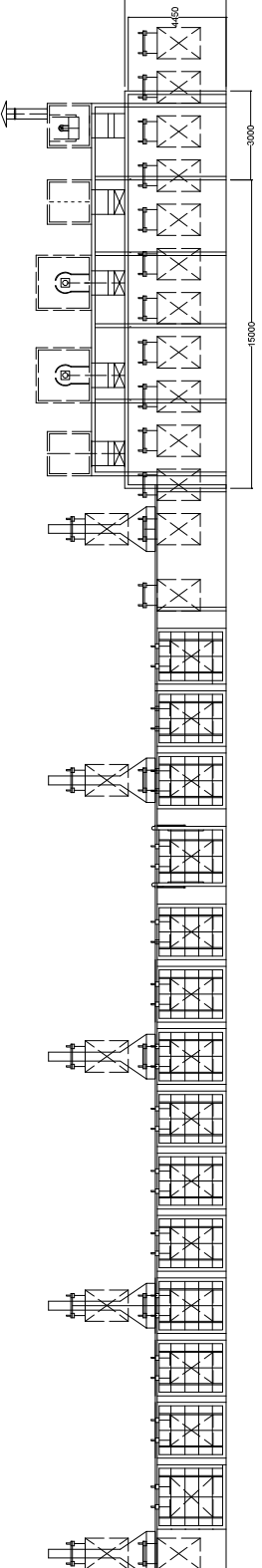
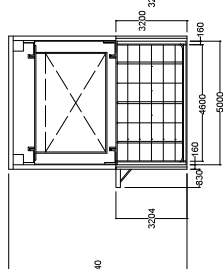


Athodic electrophoresis section view

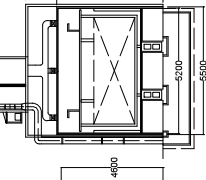


www.MarutiMachinery.com

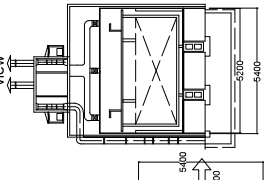
Athodic electrophoresis section view



Air curtain section view



Forced cooling Booth section view



www.MarutiMachinery.com

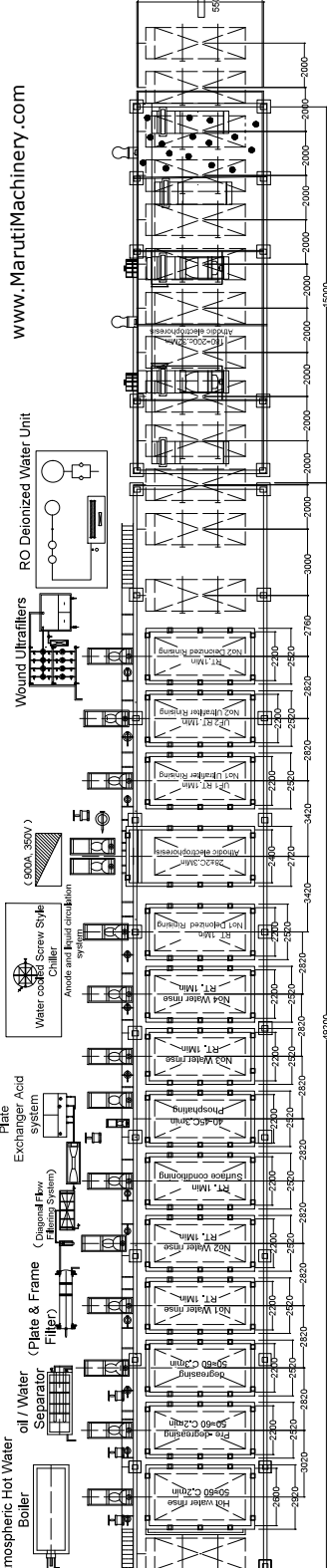
Wound Ultrafilters

Water cooled Screw Style Chiller

Plate Exchanger Acid System

oil / Water Separator (Plate & Frame Filter)

Gas Atmospheric Hot Water Boiler



Process Flow

1. Load
2. Water rinse
3. Pre-degreasing
4. Degreasing
5. No1 Water rinse
6. No2 Water rinse
7. Surface conditioning
8. Phosphating
9. No3 Water rinse
10. No4 Water rinse
11. No1 DI Rinsing
12. ED
13. No1 UF Rinsing
14. UF
15. No2 DI Rinsing
16. Dripping water
17. ED Soaking
18. Flotation
19. Cooling
20. Unload

1. Load
2. 3min RT
3. 2min 50-60°C
4. 3min 50-60°C
5. 1min RT
6. 1min RT
7. 1min RT
8. 3min 40-50°C
9. 1min RT
10. 1min RT
11. 3min RT
12. 3min 282°C
13. 1min RT
14. 1min RT
15. 1min RT
16. 3min RT
17. 32min 180-200°C Hot air
18. 8min RT
19. 8min RT
20. Unload

- Notes:
1. Product No. 16 recycle.
 2. Dimensions: LxWxH = 16000x4600x2200mm
 3. Max. Weight: 600kg
 4. Max. Height: 6000mm
 5. Height under the hoist track: 10000mm
 6. Baking ovens are ground through furnace, with air curtain at the entrance and exit.
 7. Transportation Method: Pre-Treatment LED and after treatment cleaning apply set of program control hoist, ED Baking and cooling apply step by steps vertical ground conveyors.

- Heating Source: The heating in Pre-treatment use Gas Boiler. Hot air circulation convection drying is used in the soaking equipment which is heated by gas.
- Temperature for ED Baking: 180-200°C adjustable. Baking time: 32Min. time required to achieve target temperature is 30-35 mins.
- Working hours: 3000 hrs/year. 24 hours/day, equipment annual basic working hours: 2280h.
11. Daily output: 15000 take time 8, 18min/tbody.
12. Material: Hot-dipped sheet steel.